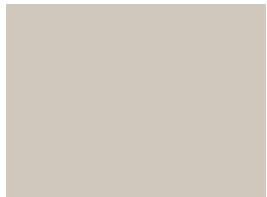
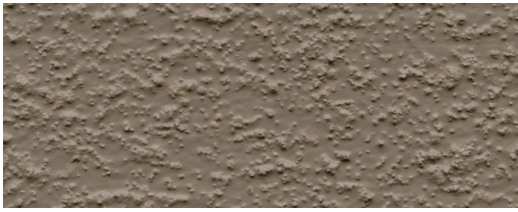


## GacoGrip Texture Granules Provide a Slip-Resistant Finish

(simulated product sample shown in Adobe)



OYSTER (DK01)



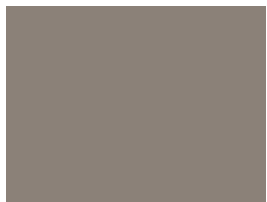
DESERT (DK49)



PEWTER (DK02)



SHALE (DK16)



ADOBE (DK18)



SEDONA (DK47)

**Note:** Color swatches presented are representations of actual colors. Actual color may vary slightly due to lighting conditions and other factors.

**WARNING:** A darker color will reflect less sunlight, creating a potential increase in the temperature of your GacoDeck.



GacoDeck coatings provide an added measure of safety with slip-resistant granules. The texture granules are integrated into the coating as an essential part of the system and cannot be dislodged under normal use.

GacoDeck coatings provides an ideal skid-resistant surface for boat docks, stair treads, wheelchair ramps and walkways. The coating system meets the recommended standards for accessible routes set forth by the Americans with Disabilities Act.



### HELPLINE

866 422 6489

Call us weekdays 8am to 5pm CST

Gaco.com

# GacoDeck™



## EASY WATERPROOFING FOR YOUR BALCONY & ROOFTOP DECK

- Turns a flat roof into a deck
- Long lasting durability
- Covers plywood, concrete, metal and fiberglass
- Meets ADA skid-resistant standards
- Limited Material Warranty available<sup>2</sup>



CEMENTS AND COATINGS FOR ROOFING SYSTEMS  
CLASSIFIED BY UNDERWRITERS LABORATORIES INC.  
AS TO AN EXTERNAL FIRE EXPOSURE ONLY 60PO



©2025 Amrize. All rights reserved. MKGD1001 1025

<sup>1</sup>ADA 302.1 Floor or Ground Surfaces.

<sup>2</sup>Conditions apply. Visit Gaco.com for details.

# GacoDeck™

## EASY WATERPROOFING FOR YOUR BALCONY & ROOFTOP DECK.

### WHAT CAN I DO WITH GACODECK?

GacoDeck coatings protects deck surfaces – including balconies, patios, roof decks, ramps and elevated walkways. In fact, any approved surface that functions as a floor over an occupied living space will benefit from the strength and protection of GacoDeck.

GacoDeck is a water-borne, single component elastomeric that incorporates ADA-compliant granules for added slip and wear resistance. The coating is designed to create a durable waterproof membrane that expands and contracts with the substrate.

GacoDeck coatings can be applied over most plywood, concrete, metal, fiberglass and most previously coated deck systems. When correctly installed the finished installation is completely seamless with no gaps, overlaps or ridges to separate or threaten the integrity of your GacoDeck protection.

### WHAT IS A ROOF DECK?

A roof deck is a flat walking deck built above an occupied living space or a roof deck that extends out over an outdoor living space. A roof deck supports the roof elements but does not provide complete protection.

Applying GacoDeck coatings adds the waterproofing layer to a roof deck. The coating becomes an integral part of the surface and provides the necessary protection against the elements.

A roof deck functions differently than a dimensional lumber deck. GacoDeck coating is not intended for use on a dimensional lumber deck.

### GACODECK ACCESSORIES



GacoDeck Primer

Use as a base coat for GacoDeck TopCoat to improve adhesion on painted surfaces, existing waterproof deck systems, and substrates in cold climates.



GacoDeck Fill

Use as a joint filler to waterproof and protect the GacoDeck system from expansion and contraction stress.



GacoDeck Tape

Adds strength and flexibility to seams, joints, small cracks, vents, drains and flashings.



GacoGrip Texture Granules

Aggregate of walnut shells provides a protective wear coat and creates the non-skid surface for pedestrian decks.



GacoDeck TopCoat

A water-borne, single component elastomeric coating. Available in 1 and 5 gallons. 1 gallon covers approximately 133 sq. ft. per coat.

### IDEAL FOR A VARIETY OF APPLICATIONS

- Balconies
- Boat Decks
- Concrete
- Lanais
- Patios
- Plywood Decks
- Porches
- Ramps
- Roof Decks
- Walkways
- Previously Coated Deck Systems

### GACODECK KIT INCLUDES EVERYTHING YOU NEED TO GET STARTED

With the GacoDeck Kit, there's no need to hunt for polyester tape, brushes or rollers. It's all neatly packaged inside. To ensure the most user-friendly experience, the GacoDeck Kit includes step-by-step instructions and a DVD demonstration of a GacoDeck application from start to finish. Once the project is complete, clean up is easy – just use soap and water.

#### Kit Includes:

- Instructions
- 10 oz GacoDeck Fill
- 4" x 120' roll DeckTape
- 1.5 lbs GacoGrip Texture Granules
- 3/4" nap roller cover
- 3" paint brush
- DVD application guide
- 3.5 gal GacoDeck TopCoat



The following items, not included in the GacoDeck Kit, may also be required for the project:

- Exterior primer
- GacoDeck Primer
- Power mixer
- 9" roller frame
- Rags for clean-up
- Painter's tape
- Scissors

Kit Covers up to 100 Sq. Ft.

For more information, visit [gaco.com](http://gaco.com)



# GacoDeck™

## Application Instructions

GacoDeck is a high-quality waterproof deck system that can be applied over plywood, concrete, metal, fiberglass and previously coated deck systems. The GacoDeck system provides lasting protection and waterproofing, plus a skid-resistant surface that cleans up easily. To ensure proper performance, it is imperative that all preparation instructions and application techniques are followed. Enclosed in the kit is a DVD application guide. It can also be viewed at gaco.com. Additional help can be obtained by calling the Gaco helpline at 866-422-6489.

### Special Circumstances

During weather above 90°F (32°C), apply coating in morning or evening. Do not apply during temperatures below 50°F (10° C) or if temperatures will fall below 50°F within 6 hours. Wait 72 hours before using deck or placing heavy objects on surface. In extremely cold climates 10°-15°F (-9° to -12°C) over a three month period, GacoDeck Primer must be used in conjunction with GacoDeck. If GacoDeck Primer is not used with GacoDeck, your deck could experience surface cracks. There are two modifications to the instructions above for extreme cold weather climates. First, all taping and flashing details must utilize GacoDeck Primer instead of GacoDeck TopCoat. Second, apply one coat of GacoDeck Primer at rate of 1 gallon per 200 square feet over entire surface prior to the first base coat. After primer is dry, you can follow normal GacoDeck instructions starting with "Base Coats" section.

### Surface Preparation

Remove large areas of dirt, mildew, grease and other debris with a broom. Apply GacoWash Concentrated Cleaner according to label instructions; do not wash a new plywood deck. Rinse with water and allow surface to dry for a minimum of 48 hours. Note: Drying time depends on weather conditions such as temperature, humidity and air movement. If more than 12 hours elapses between washing and application, wipe surface with a clean cloth to remove dust.

### Substrates

**PREVIOUSLY COATED SURFACES:** Clean surface with GacoWash Concentrated Cleaner. Allow surface to dry for a minimum of 48 hours. If applicable, prepare all cracks and seams following "Flashing, Caulking and Taping" directions. Prime surface with GacoDeck Primer at the rate of 1 gallon per 200 square feet over entire surface before applying first top coat. If surface is previously painted and has a glossy finish, lightly sanding the surface is recommended before applying primer.

**PLYWOOD:** Prepare all major seams, cracks and joints before cleaning the substrate with GacoWash; do not wash a new plywood deck. Allow surface to dry for a minimum of 48 hours. Prepare all cracks and seams following "Flashing, Caulking and Taping" directions. No primer is required for new plywood applications. If it is a previously coated plywood deck please see "Previously Coated Surfaces" directions. Do not use unsuitable grades of plywood. GacoDeck is NOT recommended for teak, cedar or redwood due to tannin bleeding on light colors. GacoDeck is not recommended if joints

View the GacoDeck application video before beginning your deck. **WARNING:** DAP Dynaflex 230® referenced in the GacoDeck application video is no longer a compatible product with GacoDeck. GacoDeckFill is the only approved acrylic joint filler for the GacoDeck system. All surfaces must be dry and clean, without wax, dust, oil, asphalt or contaminants. Do not apply GacoDeck if rain is expected. GacoDeck is not recommended over asphalt coatings.

and cracks exceed 1/8" wide. Refer to the "Deck Construction and Preliminary Preparation" for full details.

**CONCRETE:** Concrete surfaces to receive GacoDeck coating must be structural concrete that is properly ventilated 'On grade' concrete slabs must be poured over minimum 4" pea gravel base or equivalent. Concrete must cure and dry four weeks before GacoDeck application. Concrete surface should be smooth and free from rock pockets or voids without being burnished. Etching of concrete is not normally required. If concrete surface shows evidence of dusting or chalk, etch surface prior to coating application as follows: Apply diluted muriatic acid (3 parts water/1 part muriatic acid) at a rate of 75 square feet per quart following label directions and precautions. Allow the solution to work for 2-3 minutes. Scrub with stiff brush and flush with clean water to rinse from surface. Allow surface to dry for a minimum of 48 hours.

**FIBERGLASS:** No primer is required for fiberglass applications. Lightly sand surface before applying GacoDeck.

### Flashing, Caulking and Taping

**FLASHING:** All flashing must be flush with surface. If installing flashing, nail or screw every 6". Care should be taken not to buckle the flashing during installation. Metal surfaces must be primed. Lightly sand surface and prime with GacoFlex E5320 2-Part Epoxy Primer/Filler or a comparable exterior metal primer, according to label instructions. All flashing must be taped following the directions below.

**CAULKING & TAPING:** Cut GacoDeckFill nozzle at an angle to the desired bead size and puncture inner seal. Start small, and cut further down if you need a larger bead. Load GacoDeckFill cartridge into standard caulking gun. Apply GacoDeckFill to all joints, fastener indentations, cracks and transitions from the flashings to the plywood. Apply when temperatures are between 50°-90°F (10°-32°C). Joint and crack size should not exceed 3/8" wide. If width is greater than 3/8", use backer rod. Smooth flush with deck surface using a putty knife. Allow GacoDeckFill to dry for 6 hours before using DeckTape. After taping, let dry for a minimum of 6 hours before coating with GacoDeck TopCoat and allow the surface to sufficiently dry prior to any sanding. If GacoDeckFill has shrunk or settled, reapply as needed following the listed instructions. Note: Longer dry times may be required for cold temperatures, high humidity or when filler is heavily applied.

GacoDeckFill that is allowed to dry more than 24 hours should be wiped with a damp cloth prior to TopCoat application. Once the GacoDeckFill is fully cured, tape all seams, joints, cracks, flashings and changes of plane with DeckTape. Working in small sections, apply a 5-6" wide stripe of GacoDeck TopCoat. Cut the DeckTape to desired length, making all cuts with scissors. While coating is still wet, center the strip of DeckTape over the seams, joints, cracks and flashing. Embed smoothly into the coating. Immediately brush another layer of coating over the DeckTape, smoothing out any wrinkles with a brush. Verify the DeckTape is completely cured with TopCoat. If more than one piece of tape is used, overlap any adjoining pieces by a minimum of 1/2". Allow the surface to dry. Inspect tape when coating is dry or nearly dry to ensure the tape is bonded to substrate and completely smooth. Press down any fish mouths or wrinkles, cutting and re-bonding if necessary. Once dry, inspect DeckTape for fish mouth cavities, wrinkles bare spots and other defects, and repair as needed. For a

seamless finish, lightly sand the edges of the coated tape with medium grit sandpaper using a palm sander or sanding block before applying the first top coat. To prevent dirt pickup, do not leave DeckTape exposed; coat with GacoDeck Top Coat as soon as it is applied. If the GacoDeck Top Coat will terminate where there is no natural break, use painter's tape to create a clean, sharp edge.

### Coating Application

Confirm the substrate is completely dry by laying a 4 square foot piece of plastic sheeting on the deck, taped at all four corners. After a minimum of 4 hours, pull back the plastic and verify there is no amount of moisture on the deck or plastic. If moisture persists, continue drying until moisture no longer exists.

Four coats are required; recommended final film build is 28 dry mils. GacoDeck must be applied at the proper rate of 100 sq. ft. per kit to ensure proper coating thickness. Failure to do so may result in the product's failure to provide a waterproof membrane. Mix before application to ensure uniform color and consistency.

**BASE COATS:** Two base coats are required; apply at a rate of 0.75 gallons per 100 square feet by roller as received. Apply a heavy coat over the entire surface, including taped or flashed areas in order to create the waterproof elastomeric membrane. Allow the first base coat to dry for a minimum of 2-4 hours. Apply second base coat as soon as the first coat can be safely walked on. Wrap roller cover in aluminum foil or plastic in between coats.

**TOP COATS:** Add all of the GacoGrip Texture Granules to the remaining coating. Stir thoroughly for uniform consistency. Apply two separate coats at a rate of 0.75 gallons per 100 square feet by roller as received. Apply first coat in a North-South direction and allow to dry for a minimum of 2-4 hours. Apply final coat in an East-West direction as soon as the first coat can be safely walked on. If more than 72 hours elapses between coats, clean with GacoWash according to label directions. Final coat should be allowed to cure for 72 hours (depending on temperature and humidity) before suitable for heavy objects or foot traffic.

**CLEAN UP:** Clean up with soap and water.

LIMITED MATERIAL WARRANTY AVAILABLE. PLEASE VISIT WWW.GACO.COM/WARRANTY TO ACTIVATE AND VIEW THE TERMS AND CONDITIONS OF THE LIMITED WARRANTY. INSTALL AS DIRECTED ON GACO PRODUCT DATA SHEET WHICH CAN BE FOUND ON GACO.COM. BATCH NUMBERS ARE REQUIRED FOR WARRANTY REGISTRATION.

Amrize does not undertake any analysis of the architecture or engineering required to evaluate what type of System or Material is appropriate for a building and makes no warranty express or implied as to the suitability of its products for any particular structure. Such a determination is the responsibility of the architect, engineer or design professional.

*CAUTION: For specific Health and Safety information, please refer to the Safety Data Sheet which can be found on Gaco.com.*

## Deck Construction and Preliminary Preparation

Your GacoDeck Kit will only be successful if you follow the construction and deck surface instructions below.

### Plywood

Grades: Plywood should carry the trademark of the American Plywood Association. Grades "Exterior/APA A/C Group I" and "Exterior/APA B/C Group I" are suitable, as well as "Marine" grade plywood. Unsuitable grades are interior grade plywood with or without exterior glue, and underlayment grade plywood, such as "C/C Exterior," OSB, Waferboard and Exposure I markings. Do not use unsuitable grades. GacoDeck Kit is NOT recommended for Teak, Cedar or Redwood.

### Installation

All panel edges, including tongue and groove plywood, should be supported on blocking or primary framing. Plywood should be continuous across supports with all edges in moderate contact. Ideally, joints and cracks should be 1/16" - 1/8" wide.

Thickness of plywood and spans should meet the following minimums:

- 1/2" for plank or other solid substrates only
- 5/8" for supports 16" OC
- 3/4" for supports 24" OC
- 1-1/8" for supports 48" OC

Stagger joints when installing plywood over sheathed or dimensional (planked) decks.

### Repairs to Plywood

Plastic wood patch materials may be used to repair damaged plywood. Sanding before taping, especially at the joints, will improve the final appearance of the deck.

The deck should be sloped in order to freely drain, preferably to a drain or gutter (see Figure 4). One-quarter inch slope per foot is recommended. Slope is a function of structural design, and the GacoDeck Kit cannot be used to provide such a slope where it does not already exist. A deck that lacks adequate slope may experience leaks at low thresholds, standing puddles, or surface stains from ponded water and debris. Avoid soiling the fascia by incorporating a gutter or drain into your design. Insert drain flush with plywood. Install a positive drip so that drainage is outside the fascia.

### Ventilation

Good design requires that adequate ventilation be provided for the deck structure. Allow a minimum of 1" air space between the bottom of the deck and any thermal insulation.

### Nailing

Use non-rusting screws, non-rusting ring shank nails, or hot-dipped galvanized box nails only. The nails should be 6D for 3/4" or less plywood, 8D for 7/8" or more, and 10D for 1-1/8" plywood. Space fasteners 6" on center, along panel edges, and 12" on center in all directions in the field. Drive nails flush without indenting plywood.

Fig.1:  
Perimeter Detail

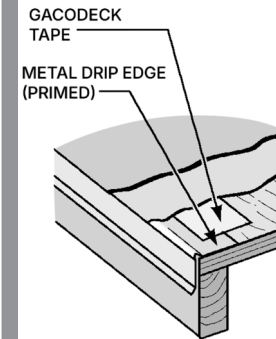


Fig.2:  
Joint Detail

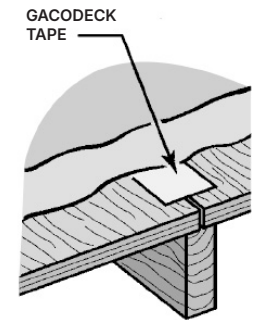


Fig.3: Change  
of Plane Detail

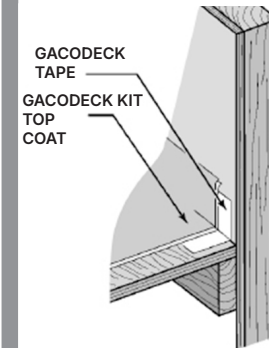
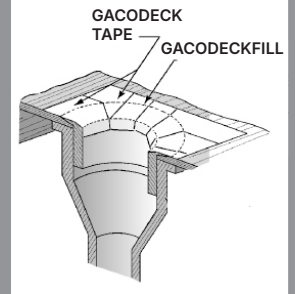


Fig.4: Plywood  
Drain Detail



 **Gaco**<sup>™</sup>  
FROM THE GROUND UP

**GACO.COM | 866 422 6489**