



# BXUV.U397

## Design/System/Construction/Assembly Usage Disclaimer

- Authorities Having Jurisdiction should be consulted in all cases as to the particular requirements covering the installation and use of UL Certified products, equipment, system, devices, and materials.
- Authorities Having Jurisdiction should be consulted before construction.
- Fire resistance assemblies and products are developed by the design submitter and have been investigated by UL for compliance with applicable requirements. The published information cannot always address every construction nuance encountered in the field.
- When field issues arise, it is recommended the first contact for assistance be the technical service staff provided by the product manufacturer noted for the design. Users of fire resistance assemblies are advised to consult the general Guide Information for each product category and each group of assemblies. The Guide Information includes specifics concerning alternate materials and alternate methods of construction.
- Only products which bear UL's Mark are considered Certified.

BXUV - Fire Resistance Ratings - ANSI/UL 263 Certified for United States

BXUV7 - Fire Resistance Ratings - CAN/ULC-S101 Certified for Canada

[See General Information for Fire-resistance Ratings - ANSI/UL 263 Certified for United States Design Criteria and Allowable Variances](#)

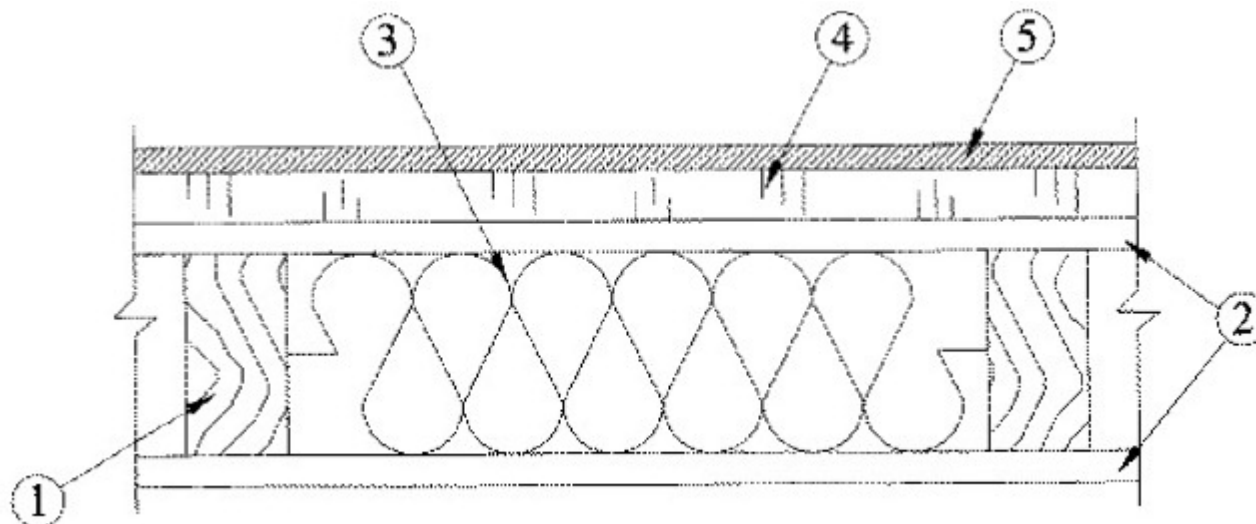
[See General Information for Fire Resistance Ratings - CAN/ULC-S101 Certified for Canada Design Criteria and Allowable Variances](#)

## Design No. U397

November 23, 2020

### **Bearing and Non-Load Wall Rating — 1 Hr. (See Item 3A)**

**\* Indicates such products shall bear the UL or cUL Certification Mark for jurisdictions employing the UL or cUL Certification (such as Canada), respectively.**



1. **Wood Studs** — Min. nom 2 by 4 in., spaced 16 in. OC.

2. **Gypsum Board\*** — Any 5/8 in. thick UL Classified Gypsum Board that is eligible for use in Design Nos. L501, G512 or U305. Nom 5/8 in. thick (min) 4 ft wide installed vertically. Attached to studs with 6d cement coated nails or 1-7/8 in. long No. 6 buglehead dry wall screws spaced 7 in. OC at the edges and in the fields. Vertical joints located over studs. Joints covered with paper tape and joint compound. Nail heads covered with joint compound.

**CABOT MANUFACTURING ULC** ([View Classification](#)) — CKNX.R25370

**AMERICAN GYPSUM CO** ([View Classification](#)) — CKNX.R14196

**BEIJING NEW BUILDING MATERIALS PUBLIC LTD CO** ([View Classification](#)) — CKNX.R19374

**CERTAINTED GYPSUM INC** ([View Classification](#)) — CKNX.R3660

**CGC INC** ([View Classification](#)) — CKNX.R19751

**GEORGIA-PACIFIC GYPSUM L L C** ([View Classification](#)) — CKNX.R2717

**CONTINENTAL BUILDING PRODUCTS OPERATING CO, L L C** ([View Classification](#)) — CKNX.R18482

**LOADMASTER SYSTEMS INC** ([View Classification](#)) — CKNX.R11809

**NATIONAL GYPSUM CO** ([View Classification](#)) — CKNX.R3501

**PABCO BUILDING PRODUCTS L L C, DBA PABCO GYPSUM** ([View Classification](#)) — CKNX.R7094

**PANEL REY S A** ([View Classification](#)) — CKNX.R21796

**SIAM GYPSUM INDUSTRY (SARABURI) CO LTD** ([View Classification](#)) — CKNX.R19262

**GEORGIA-PACIFIC GYPSUM L L C** ([View Classification](#)) — CKNX.R6937

**THAI GYPSUM PRODUCTS PCL** ([View Classification](#)) — CKNX.R27517

**UNITED STATES GYPSUM CO** ([View Classification](#)) — CKNX.R1319

**USG MEXICO S A DE C V** ([View Classification](#)) — CKNX.R16089

2A. **Gypsum Board\*** — (As an alternate to Item 2. For use with Item 3B) — Any 5/8 in. thick, 4 ft. wide, Gypsum Board UL Classified for Fire Resistance (CKNX) eligible for use in Design Nos. U305 and L501 or G512. Applied either horizontally or vertically, and screwed to studs with 1-5/8 in. long Type W coarse thread steel screws at 8 in. OC at perimeter and in the field with the last two screws 4 and 3/4 in. from the edges of the board. When used in widths other than 48 in., gypsum panels are to be installed horizontally.

2B. **Gypsum Board\*** — (As an alternate to Item 2, for use with Item 3C) — 5/8 in. thick, 4 ft. wide, applied vertically with vertical joints centered over studs and staggered one stud cavity on opposite sides of studs. Gypsum panels nailed 7 in. OC with 6d cement coated nails 1-7/8 in. long, 0.0915 in. shank diam and 15/64 in. diam heads.

**AMERICAN GYPSUM CO** — Types AGX-1

**BEIJING NEW BUILDING MATERIALS PUBLIC LTD CO** — Type DBX-1

**CABOT MANUFACTURING ULC** — "5/8 Type X"

**CERTAINTED GYPSUM INC** — Type X

**CGC INC** — Type SCX

**PANEL REY S A** — Type PRX

**SIAM GYPSUM INDUSTRY (SARABURI) CO LTD** — Type EX-1

**THAI GYPSUM PRODUCTS PCL** — Type X

**UNITED STATES GYPSUM CO** — Type SCX

**USG MEXICO S A DE C V** — Type SCX

2C. **Gypsum Board\*** — (As an alternate to Item 2. For use with Item 3D) — Any 5/8 in. thick, 4 ft. wide, Gypsum Board listed in Item 2 above. Applied vertically with vertical joints centered over studs and staggered one stud cavity on opposite sides of studs. Gypsum panels secured to studs with 1-7/8 in. long No. 6 buglehead dry wall screws spaced 7 in. OC at the edges and in the fields.

3. **Batts and Blankets\*** — Min. 3-1/2 in. glass fiber or mineral wool batts placed to fill cavity of wall.  
See **Batts and Blankets\*** (BZJZ) Category for names of Classified companies.

3A. **Foamed Plastic\*** — (As an alternate to Item 3) — Spray applied, foamed plastic insulation, at any thickness from partial fill to completely filling stud cavity.

**BASF CORP** — Enertite® NM, Enertite® G, FE178®, Spraytite® 178, Spraytite® 81206, Walltite® 200, Walltite® US, Walltite® US-N, Spraytite® 158, Comfort Foam® 158, and Spraytite® 81205

a. **For Use in Bearing Walls** — Enertite® NM, Enertite® G, FE178®, Spraytite® 178, Spraytite® 81206, Walltite® 200, Walltite® US, Walltite® US-N

b. **For Use in Non-Bearing Walls** — Enertite® NM, Enertite® G, FE178®, Spraytite® 178, Spraytite® 81206, Walltite® 200, Walltite® US, Walltite® US-N, FE137®, FE158®, Spraytite® 158, Spraytite® SP and Spraytite® 81205

3B. **Foamed Plastic\*** — (As an alternate to Item 3) — Spray applied, foamed plastic insulation, at any thickness from partial fill to completely filling stud cavity.

**SES FOAM INC** — Nexseal™ 2.0 or Nexseal™ 2.0 LE Spray Foam and Sucraseal Spray Foam. For use in Bearing and Non-Load Bearing Walls.

3C. **Foamed Plastic\*** — (As an alternate to Item 3 - For use with Item 2B) — Spray applied, foamed plastic insulation, at any thickness from partial fill to completely filling stud cavity.

**GACO WESTERN L L C** — Types GacoEZSpray F4500, GacoProFill FR6500R, Gaco 052N, GacoOnePass F1850, GacoOnePass Low GWP F1880, and Gaco WallFoam 183M

3D. **Foamed Plastic\*** — (As an alternate to Item 3 - For use with Item 2C) — Spray applied, foamed plastic insulation, at any thickness from partial fill to completely filling stud cavity.

**CARLISLE SPRAY FOAM INSULATION** — SealTite Pro Closed Cell (CC), SealTite Pro Open Cell (OC), SealTite Pro OCX, SealTite Pro No Trim, and SealTite Pro One Zero.

4. **Foamed Plastic\*** — Spray applied, foamed plastic insulation.

**NCFI POLYURETHANES** — NCFI 11-017, NCFI 11-016, NCFI 11-015

4A. **Foamed Plastic\*** — (As an alternate to Item 4) Spray applied, foamed plastic insulation.

**BASF CORP** — Enertite® NM, Enertite® G, FE178®, Spraytite® 178, Spraytite® 81206, Walltite® 200, Walltite® US and Walltite® US-N

4B. **Foamed Plastic\*** — (As an alternate to Item 4) — Spray applied, foamed plastic insulation.

**SES FOAM INC** — Nexseal™ 2.0 or Nexseal™ 2.0 LE Spray Foam and Sucraseal Spray Foam. For use in Bearing and Non-Load Bearing Walls.

5. **Exterior Facings** — Installed in accordance with the manufacturer's installation instructions. One of the following exterior facings is to be applied over the sheathing:

A. **Vinyl Siding Molded Plastic\*** — Contoured rigid vinyl siding having a flame spread value of 20 or less.

See **Molded Plastic** (BTAT) category in the Building Materials Directory for names of manufacturers.

B. **Particle Board Siding** — Hardboard exterior sidings including patterned panel or lap siding.

C. **Wood Structural Panel or Lap Siding** — APA Rated Siding, Exterior, plywood, OSB or composite panels with veneer faces and structural wood core, per PS 1 or APA Standard PRP-108, including textured, rough sawn, medium density overlay, brushed, grooved and lap siding.

D. **Cementitious Stucco** — Portland cement or synthetic stucco systems with self-furring metal lath or adhesive base coat. Thickness from 3/8 to 3/4 in., depending on system.

E. **Brick** — Brick veneer, meeting the requirements of local code agencies. Brick veneer attached to the studs with corrugated metal wall ties attached to each stud with 8d cement coated nails, every sixth course of bricks.

F. **Wall and Partition Facings and Accessories\*** — Adhered stone veneer is mortar bonded to a lath, scratch coat and water resistant barrier, installed in accordance with the manufacturers installation instructions, and meeting the requirements of local code agencies.

**ELDORADO STONE OPERATIONS L L C** — Type Eldorado Stone

**\* Indicates such products shall bear the UL or cUL Certification Mark for jurisdictions employing the UL or cUL Certification (such as Canada), respectively.**

Last Updated on 2020-11-23

---

The appearance of a company's name or product in this database does not in itself assure that products so identified have been manufactured under UL's Follow-Up Service. Only those products bearing the UL Mark should be considered to be Certified and covered under UL's Follow-Up Service. Always look for the Mark on the product.

UL permits the reproduction of the material contained in the Online Certification Directory subject to the following conditions: 1. The Guide Information, Assemblies, Constructions, Designs, Systems, and/or Certifications (files) must be presented in their entirety and in a non-misleading manner, without any manipulation of the data (or drawings). 2. The statement "Reprinted from the Online Certifications Directory with permission from UL" must appear adjacent to the extracted material. In addition, the reprinted material must include a copyright notice in the following format: "© 2020 UL LLC"