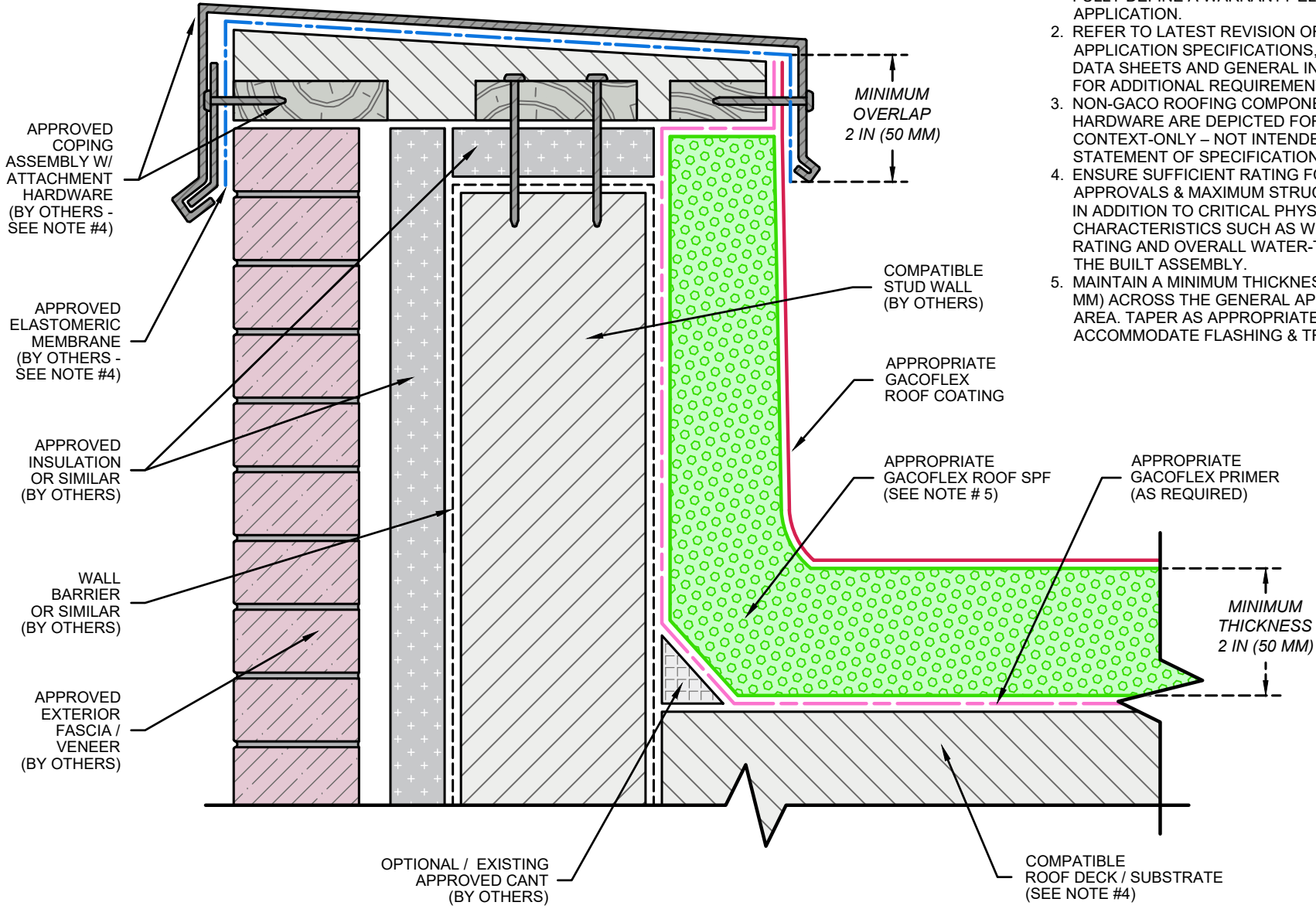


- NOTE:
1. FOR GENERAL REFERENCE ONLY – NOT INTENDED FOR PROJECT- SPECIFIC USE OR TO FULLY DEFINE A WARRANTY ELIGIBLE APPLICATION.
 2. REFER TO LATEST REVISION OF APPROPRIATE APPLICATION SPECIFICATIONS, PRODUCT DATA SHEETS AND GENERAL INSTRUCTIONS FOR ADDITIONAL REQUIREMENTS.
 3. NON-GACO ROOFING COMPONENTS AND HARDWARE ARE DEPICTED FOR CONTEXT-ONLY – NOT INTENDED AS A STATEMENT OF SPECIFICATION.
 4. ENSURE SUFFICIENT RATING FOR CODES, APPROVALS & MAXIMUM STRUCTURAL LOAD(S) IN ADDITION TO CRITICAL PHYSICAL CHARACTERISTICS SUCH AS WIND LIFT OF RATING AND OVERALL WATER-TIGHTNESS OF THE BUILT ASSEMBLY.
 5. MAINTAIN A MINIMUM THICKNESS OF 2 IN (50 MM) ACROSS THE GENERAL APPLICATION AREA. TAPER AS APPROPRIATE TO ACCOMMODATE FLASHING & TRANSITIONS.



**PARAPET W / CAVITY WALL
(CONTINUOUS AIR BARRIER & INSULATION)**

MAXIMUM WARRANTY TERM:
REFER TO APPROPRIATE APPLICATION SPECIFICATIONS



GACOFLEX™ CATEGORY: | ROOFING SYSTEMS (RS)

COMPATIBLE SUBSTRATE TYPES: | REFER TO APPROPRIATE APPLICATION SPECIFICATIONS

REVISION DATE:
08/03/2023

DETAIL NO.
GA-RS-PA-4