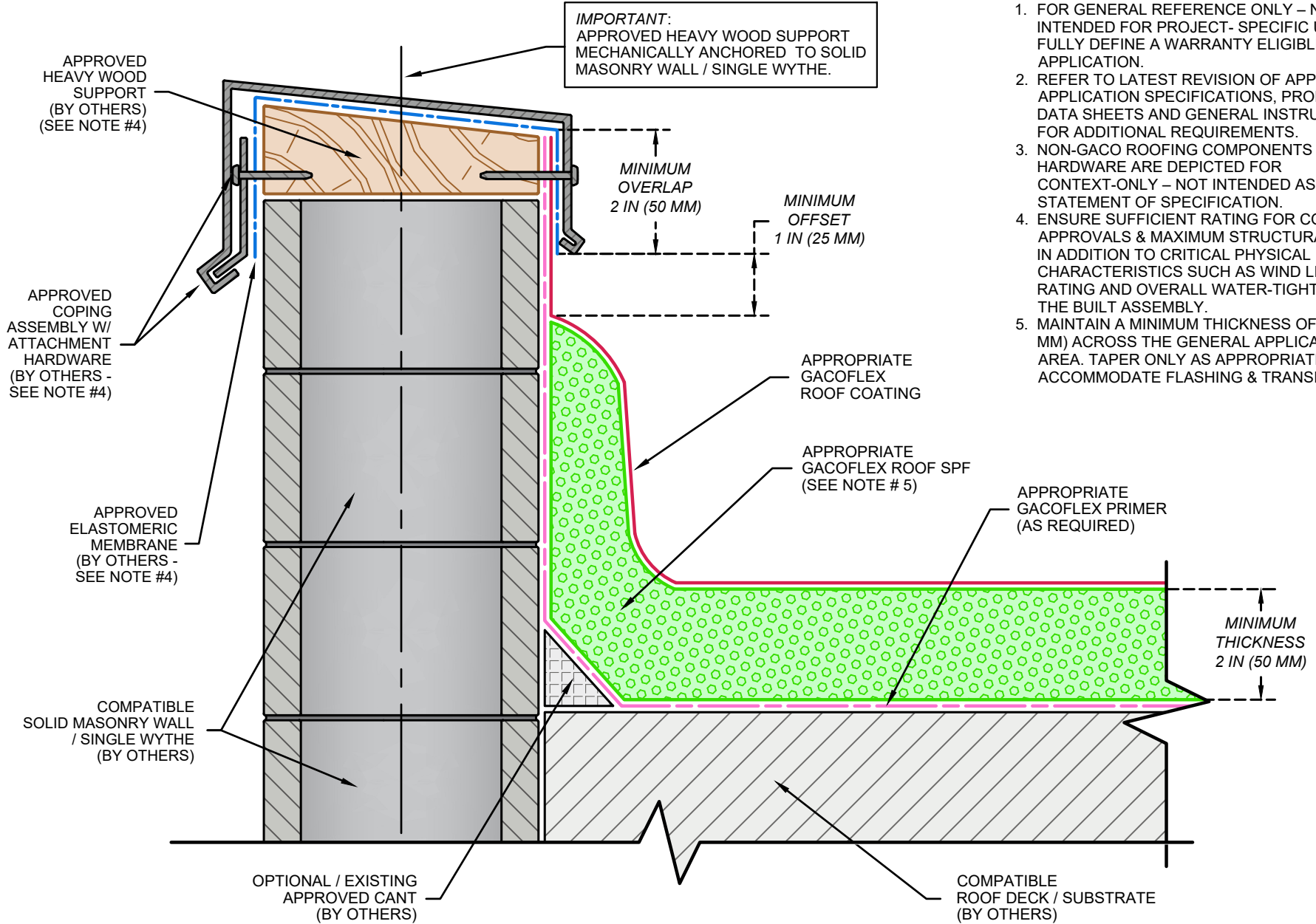


**NOTE:**

1. FOR GENERAL REFERENCE ONLY – NOT INTENDED FOR PROJECT- SPECIFIC USE OR TO FULLY DEFINE A WARRANTY ELIGIBLE APPLICATION.
2. REFER TO LATEST REVISION OF APPROPRIATE APPLICATION SPECIFICATIONS, PRODUCT DATA SHEETS AND GENERAL INSTRUCTIONS FOR ADDITIONAL REQUIREMENTS.
3. NON-GACO ROOFING COMPONENTS AND HARDWARE ARE DEPICTED FOR CONTEXT-ONLY – NOT INTENDED AS A STATEMENT OF SPECIFICATION.
4. ENSURE SUFFICIENT RATING FOR CODES, APPROVALS & MAXIMUM STRUCTURAL LOAD(S) IN ADDITION TO CRITICAL PHYSICAL CHARACTERISTICS SUCH AS WIND LIFT OF RATING AND OVERALL WATER-TIGHTNESS OF THE BUILT ASSEMBLY.
5. MAINTAIN A MINIMUM THICKNESS OF 2 IN (50 MM) ACROSS THE GENERAL APPLICATION AREA. TAPER ONLY AS APPROPRIATE TO ACCOMMODATE FLASHING & TRANSITIONS.



**Gaco™**

**PARAPET W / SOLID MASONRY WALL / SINGLE WYTHE**

**MAXIMUM WARRANTY TERM:**  
REFER TO APPROPRIATE APPLICATION SPECIFICATIONS

**GACOFLEX™ CATEGORY:** | ROOFING SYSTEMS (RS)

**COMPATIBLE SUBSTRATE TYPES:** | REFER TO APPROPRIATE APPLICATION SPECIFICATIONS

**REVISION DATE:**  
08/04/2023

DETAIL NO.  
**GA-RS-PA-5**