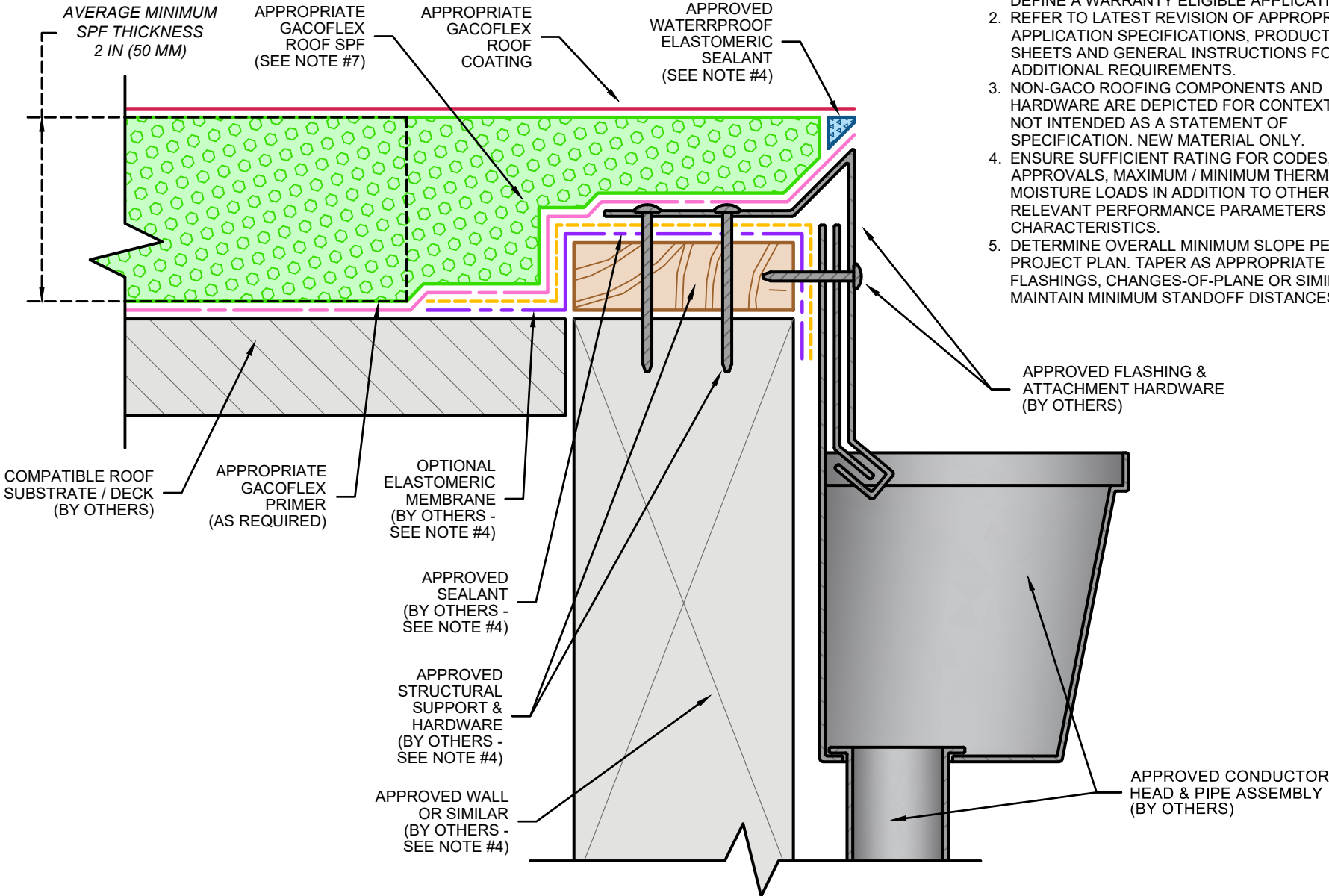


NOTE:

1. FOR GENERAL REFERENCE ONLY – NOT INTENDED FOR PROJECT- SPECIFIC USE OR TO FULLY DEFINE A WARRANTY ELIGIBLE APPLICATION.
2. REFER TO LATEST REVISION OF APPROPRIATE APPLICATION SPECIFICATIONS, PRODUCT DATA SHEETS AND GENERAL INSTRUCTIONS FOR ADDITIONAL REQUIREMENTS.
3. NON-GACO ROOFING COMPONENTS AND HARDWARE ARE DEPICTED FOR CONTEXT-ONLY – NOT INTENDED AS A STATEMENT OF SPECIFICATION. NEW MATERIAL ONLY.
4. ENSURE SUFFICIENT RATING FOR CODES, APPROVALS, MAXIMUM / MINIMUM THERMAL & MOISTURE LOADS IN ADDITION TO OTHER RELEVANT PERFORMANCE PARAMETERS / CHARACTERISTICS.
5. DETERMINE OVERALL MINIMUM SLOPE PER PROJECT PLAN. TAPER AS APPROPRIATE FOR FLASHINGS, CHANGES-OF-PLANE OR SIMILAR. MAINTAIN MINIMUM STANDOFF DISTANCES.



Gaco™

ROOF EDGE W / GUTTER

MAXIMUM WARRANTY TERM:
REFER TO APPROPRIATE APPLICATION SPECIFICATIONS

GACOFLEX™ CATEGORY: | ROOFING SYSTEMS (RS)

COMPATIBLE SUBSTRATE TYPES: | REFER TO APPROPRIATE APPLICATION SPECIFICATIONS

REVISION DATE:
09/18/2023

DETAIL NO.
GA-RS-RE-2